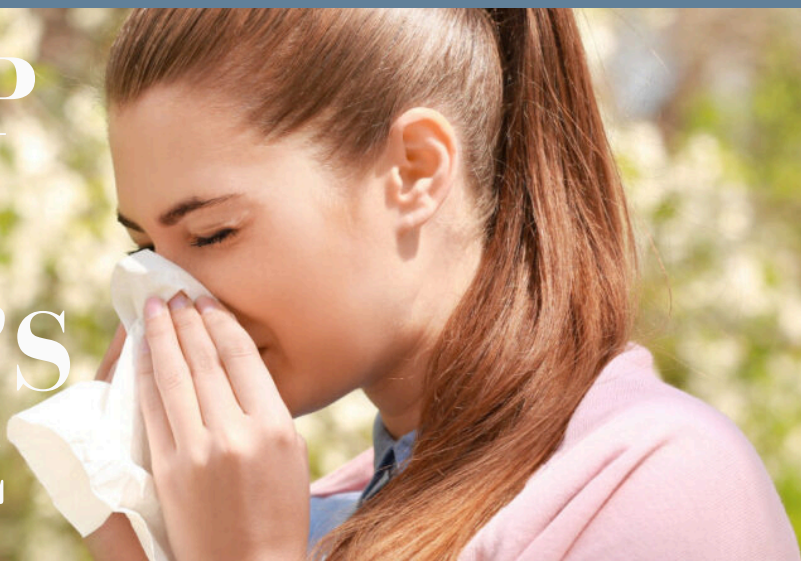


# OXFORD-RCGP RSC DIRECTOR'S MESSAGE



YOUR WEEKLY UPDATE FROM PROF. SIMON DE LUSIGNAN,  
DIRECTOR OF THE OXFORD-RCGP RSC

## *Keeping Patients Well Informed*

Transparency about our Oxford-RCGP RSC network, especially the use of pseudonymised patient data, and our surveillance service is of high importance to us. We hope it is the same for you.

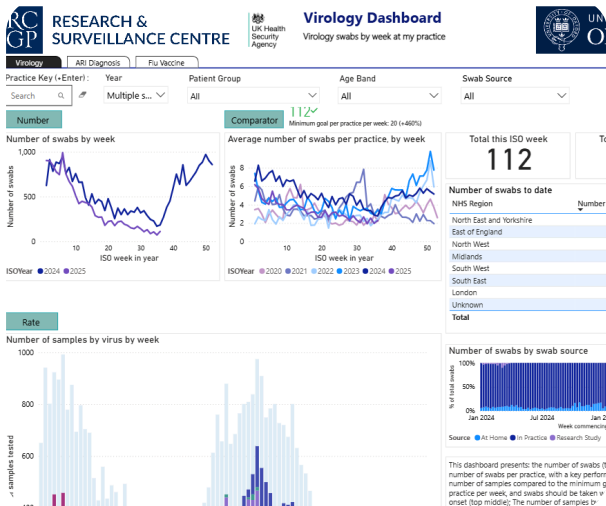
We ask that all network practices highlight their membership and what that entails for their patient population to see. This can be done in a number of ways, all provided by your dedicated Practice Liaison Officer team.

As well as our standard Patient Information Leaflet, provided at the point of swabbing or sampling, we also have a data specific information leaflet. These information leaflets can be found on the [Information for Patients](#) page of our website.

This year we are also introducing webpage and email banners, informing patients of a practice's participation. An example is below.

These resources will be available on the RSC Hub once it goes live but, for now, can be requested through the Practice Liaison Team email [practiceenquiries@phc.ox.ac.uk](mailto:practiceenquiries@phc.ox.ac.uk)





## Practice Dashboards

Have you visited your practice dashboard lately? Why not take a look now!

Our Virology and Serology dashboards are a useful tool for practices to monitor, not only their participation, but also the swab results and prevalent viruses circulating in their practices and communities. *Please note these dashboards do not show patient identifiers.*

The data can be viewed from the perspective of the network as a whole and, with the practice specific dashboard key, on an individual basis.

If you would like a walk through with a member of our team, don't hesitate to ask.

## Let's get social

Our Clinical Informatics and Health Outcomes Research Group now has social accounts.

Follow our accounts for regular updates on topics like:

- Updates to the network
- Our surveillance Service
- Upcoming events we will be attending
- Important reminders
- Webinars and Training

We are always happy to connect.

### Our accounts

**Bluesky:** [cihorg-ox.bsky.social](https://cihorg-ox.bsky.social)

**LinkedIn:** [Clinical Informatics and Health Outcomes Research Group](#)

**Instagram:** [cihorg\\_ox](#)



## Article of the week

### The Impact of Point-of-Care Testing for Influenza on Antimicrobial Stewardship in UK Primary Care: Nested Cohort Study

Influenza and respiratory syncytial virus (RSV) predominantly circulate during the winter season and cause acute respiratory illness (ARI)

Deploying molecular point-of-care testing (POCT) in primary care can inform whether a patient presenting with an ARI has influenza or RSV. An early virological diagnosis could facilitate appropriate use of antivirals and enable better antimicrobial stewardship.

This study aimed to report the impact of POCT for influenza and RSV on antimicrobial prescribing, including antiviral therapy in primary care.

[Read the full article here](#)

