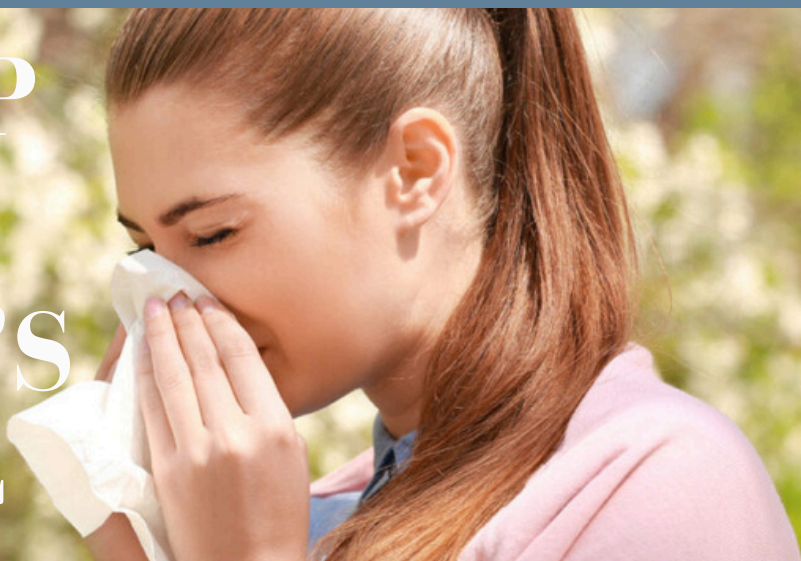


OXFORD-RCGP RSC DIRECTOR'S MESSAGE



YOUR WEEKLY UPDATE FROM PROF. SIMON DE LUSIGNAN,
DIRECTOR OF THE OXFORD-RCGP RSC

Your Oxford-RCGP RSC Team: Dr. José Ordóñez-Mena

Dr. José Manuel Ordóñez-Mena is a Senior Medical Statistician at the Nuffield Department of Primary Care Health Sciences, University of Oxford. His research specializes in the analysis of large-scale electronic health records (EHR), utilizing major primary care databases such as the RCGP Research and Surveillance Centre and the Clinical Practice Research Datalink (CPRD).

A core focus of his work involves cardiovascular and renal diseases, particularly heart failure diagnosis and mortality trends. He also possesses extensive expertise in advanced meta-analysis and systematic reviews, including network meta-analysis and individual participant data meta-analysis. His broader research interests encompass multimorbidity, cancer epidemiology (with a specific focus on Vitamin D and smoking-associated risks), and more recently, the epidemiology of respiratory infections like COVID-19 and RSV.

In addition to his research, Dr. Ordóñez-Mena is a dedicated educator, serving as the coordinator for the Meta-Analysis module and supervising DPhil and MSc students. His profile reflects a robust intersection of medical statistics, clinical informatics, and evidence-based healthcare.



Royal College of General Practitioners: Research Ready

Are you interested in conducting research within your practice but not sure where to start?

The RCGP Research Ready programme gives access to training and research support to upskill the whole practice team. It provides GP practices with quality assurance, guidance and support to meet legal, ethical and safety standards for conducting primary care research.

Joining and completing the Research Ready programme allows practices to:

- Gain accreditation demonstrating the practice is aware of and meets all relevant legal, ethical, professional, governance and patient safety responsibilities
- Join a network of GP practices and receive regular updates on local and national research opportunities
- Access to a series of online resources, including: case studies, articles and templates designed by RCGP, RDN and other GP practices, which may be of use to support research projects.

To find out more about Research Ready including, steps to joining visit this link [Research Ready](#)

New Lab and New Workflow: LabReach

As we are sure you are aware, the Respiratory Surveillance Sampling workflow is a vitally important part of the activity the RCGP RSC are involved in and the results are key to many of the reports produced by the UKHSA.

Many of you are already involved in this process and you have typically been sending the completed swab kits to UKHSA Colindale for testing.

Earlier this year the respiratory surveillance testing capabilities were expanded to include the UKHSA Laboratory in Bristol. A key requirement of the Bristol Laboratory was that the requests they received were electronic rather than on a paper form.

This has required the enablement of a new workflow. We are really pleased to announce that this has been achieved and the workflow is called LabReach.

LabReach is a cloud based order comms solution that can be made available to specific practices presenting them the Respiratory Surveillance Profile. This profile covers:

- Covid
- RSV
- Flu A
- Flu B

If the Flu A is positive, further subtyping is then tested for.

LabReach allows each Practice to be managed individually with assigned user accounts created. The patient detail is automatically populated after a NHS number query to the Spine PDS.

The ordering process is extremely straight forward and results in a fully populated electronic request message being sent to the Laboratory as well as a printed A4 request form for inclusion in the swab kit.

The results are then returned to the practice via LabReach and a notification sent to inform the practice the results are available

The pilot of LabReach commenced just before Christmas and that proved to be an outstanding success. In the new year a decision was made to roll the solution out to other practices. We currently have 7 practices Live and just under 200 samples have been submitted to date.

The feedback from the practices has been extremely positive:

“all the staff are being very supportive and the patients are very interested...”

“Our clinicians are all loving the swabbing – they’re all very enthusiastic!!”

The plan is to continue the expansion to targeted practices providing the regional coverage that is key to the UKHSA.

We feel the success of LabReach is key in order to allow the Labs to operate efficiently, for results to be turned around in a timely manner and for the data quality to be consistently high.

If you have any questions regarding LabReach, please feel free to contact the PLO team and we will endeavour to answer any questions

Finally, thank you for all of your support

PCRA Members Conference

Prof Simon de Lusignan and Dr Timea Suli had an enjoyable time at today's PCRA Member's Conference in Kettering.

Timea described it as “a really engaging and exciting event. Lots of enthusiasm for research and surveillance.”

