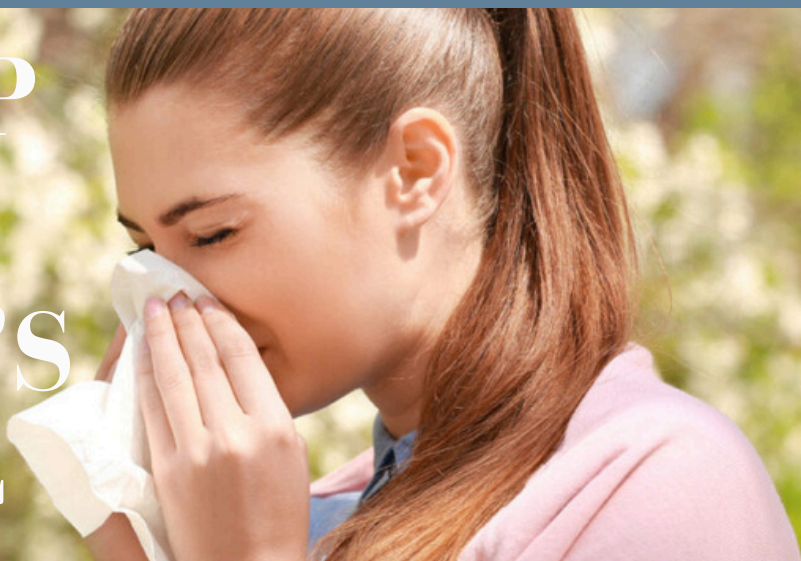


OXFORD-RCGP RSC DIRECTOR'S MESSAGE



YOUR WEEKLY UPDATE FROM PROF. SIMON DE LUSIGNAN,
DIRECTOR OF THE OXFORD-RCGP RSC

Your Oxford-RCGP RSC Team: Michael Bride

I joined the RSC as a doctoral student and researcher in 2025, after moving here from The United States. My background is in global public health, where I previously developed quantitative surveys and evaluated behaviour change interventions across sub-Saharan Africa in my previous role at Johns Hopkins University.

At the RSC, I use the routinely collected data to study influenza vaccination uptake and effectiveness in England. I'm really interested in systemic challenges to service delivery and how to strengthen patients trust in their providers. I really appreciate being able to work with a diverse array of researchers, providers, government offices, and patients as a part of the RSC to protect the most vulnerable populations.

Outside of the office, I enjoy hiking and exploring new places around Oxford and England. I love trying new foods and learning the history of various towns and areas. This is my first time living in England and I've really enjoyed how welcoming and friendly my time so far has been.



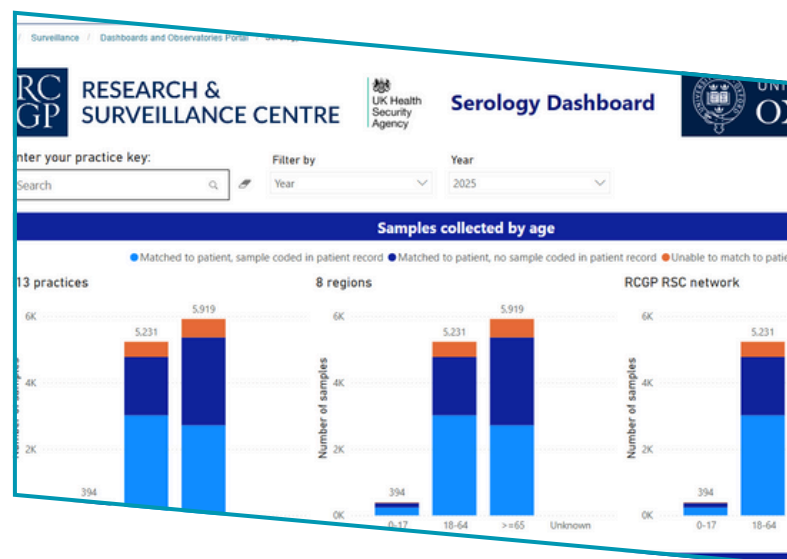
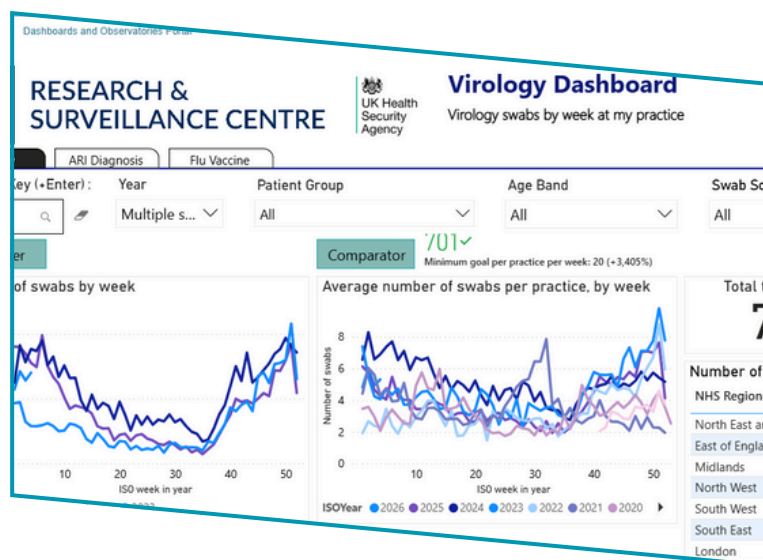
Bespoke Practice Dashboards

If you have not yet had a chance to explore our bespoke practice dashboards for **Virology** and **Serology**, please take some time to do so.

Practices that participate in our virology swabbing and/or serology sampling can monitor their progress through these two practice dashboards. Practices can access their practice level data by entering the designated dashboard key.

Examples of the type of data you can expect to see in these sections are as follows:

- Number of swabs by week
- Average number of swabs per practice by week
- Percentage of positive samples by week
- Percentage of positive samples by viral strain by week
- Number of swabs by swab source (i.e. in practice or at home test)



The serology dashboard highlights the following data:

- Samples collected by age
- Samples collected by week

If you are unsure about your practice key, please ask a member of the Practice Liaison Team.

Patient Resources

Do you know where to find patient facing materials?

Our website has a page dedicated to explaining the rationale behind our surveillance work and how it will impact the patient.

Our [Information for Patients](#) page also contains various information sheets and posters for our virology and serology sampling pathways, as well as a data privacy notice to explain how our research impacts a data subject.

