

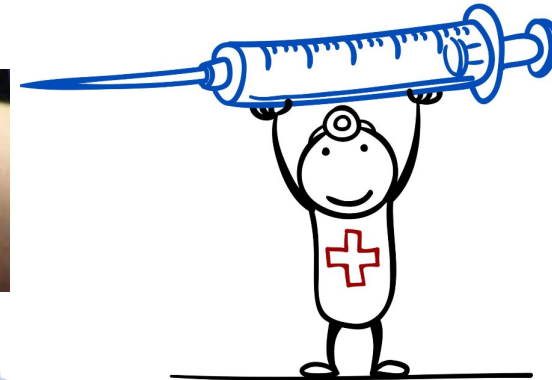


## RESEARCH PROJECT IN THIS SURGERY

### ARE YOU HAVING A FLU VACCINE THIS YEAR?

Following a flu vaccination,  
have you ever experienced:

- ◆ **Headache**
- ◆ **Rash**
- ◆ **More severe allergic reactions ?**



This surgery is taking part in a research programme to explore how influenza vaccine safety could be monitored using primary care data. We will assess the reactions to vaccine (adverse event of interest (AEI)) frequencies among flu-vaccinated subjects using routinely collected data in England to provide timely and relevant information on influenza vaccine safety. AEIs are reactions to vaccines, which could include rashes, headaches, or more severe allergic reactions.

**If you would like to find out more about this study you can contact the research team directly:**

**Prof Simon de Lusignan**  
**Professor of Primary Care & Clinical Informatics**  
Phone: +44 (0) 1483 684802  
E-mail: [s.lusignan@surrey.ac.uk](mailto:s.lusignan@surrey.ac.uk)

**Ivelina Yonova**  
**Practice Liaison Officer**  
Phone: +44 (0) 1483 682758  
E-mail: [i.yonova@surrey.ac.uk](mailto:i.yonova@surrey.ac.uk)