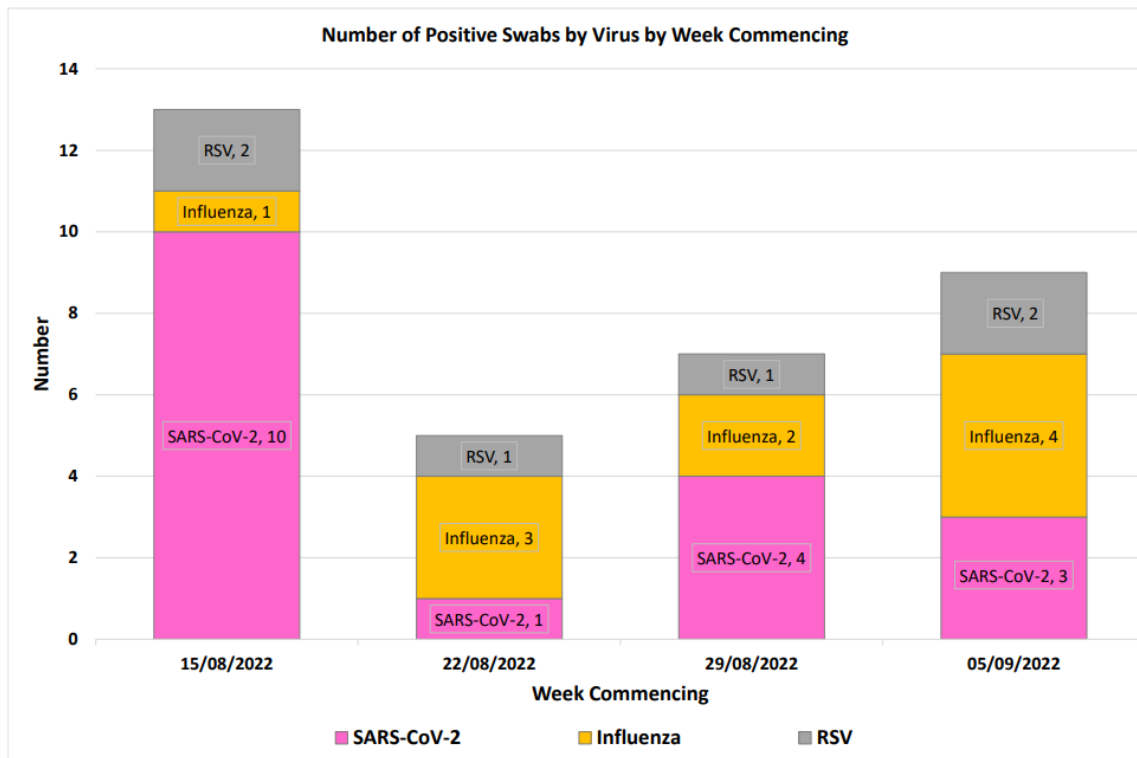


Your weekly sampling news from our GP colleagues, Dr Debabish Kar, Dr Nick Thomas, Dr Will Elson and Dr Gavin Jamie on behalf of the Oxford RCGP RSC.

SAMPLING IS INFORMING

Our Network's Samples What your data contributed to recently

VIROLOGY

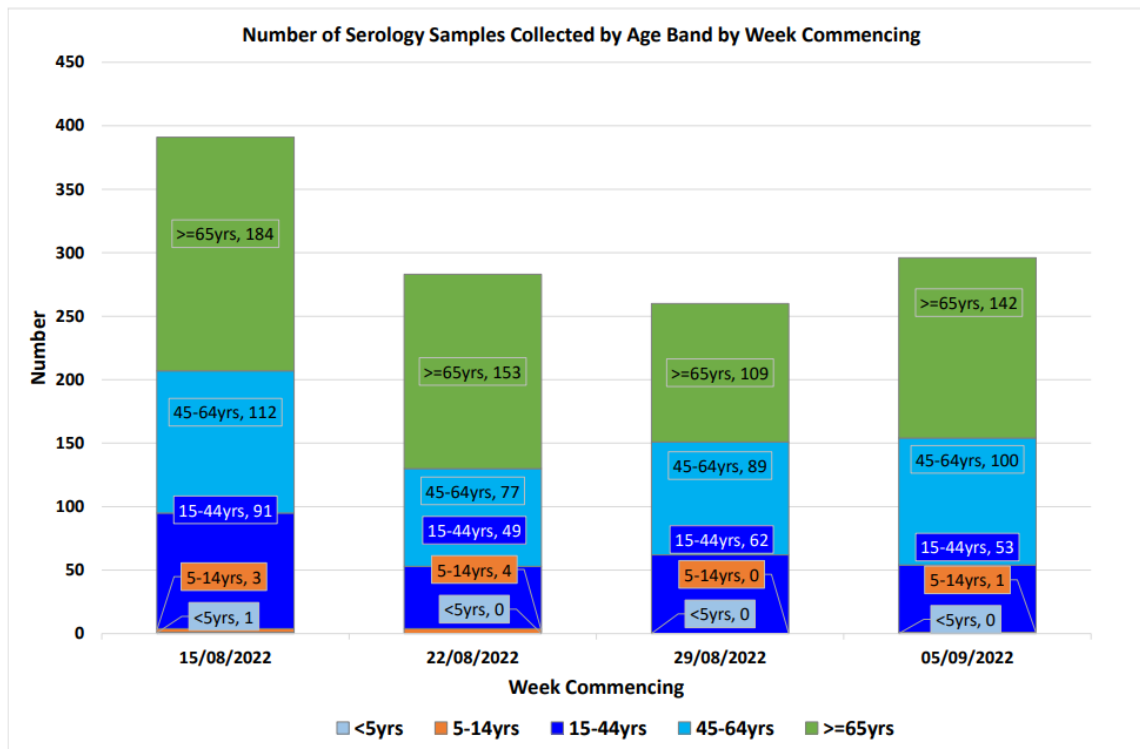


Thank you for continuing to provide virology samples from your patients.

The number of positive swabs collected from the week commencing on 15th August 2022 suggests that the SARS-CoV-2, RSV, and Influenza viruses are the major respiratory infections prevalent in the community. In the week commencing on 5th September 2022, out of 9 positive swabs, 3 were positive for SARS-CoV-2, 4 for influenza, and 2 for RSV.

Thank you for any swabbing you have carried out. This information will guide the UKHSA to decide the immunisation programme for the coming months.

SEROLOGY

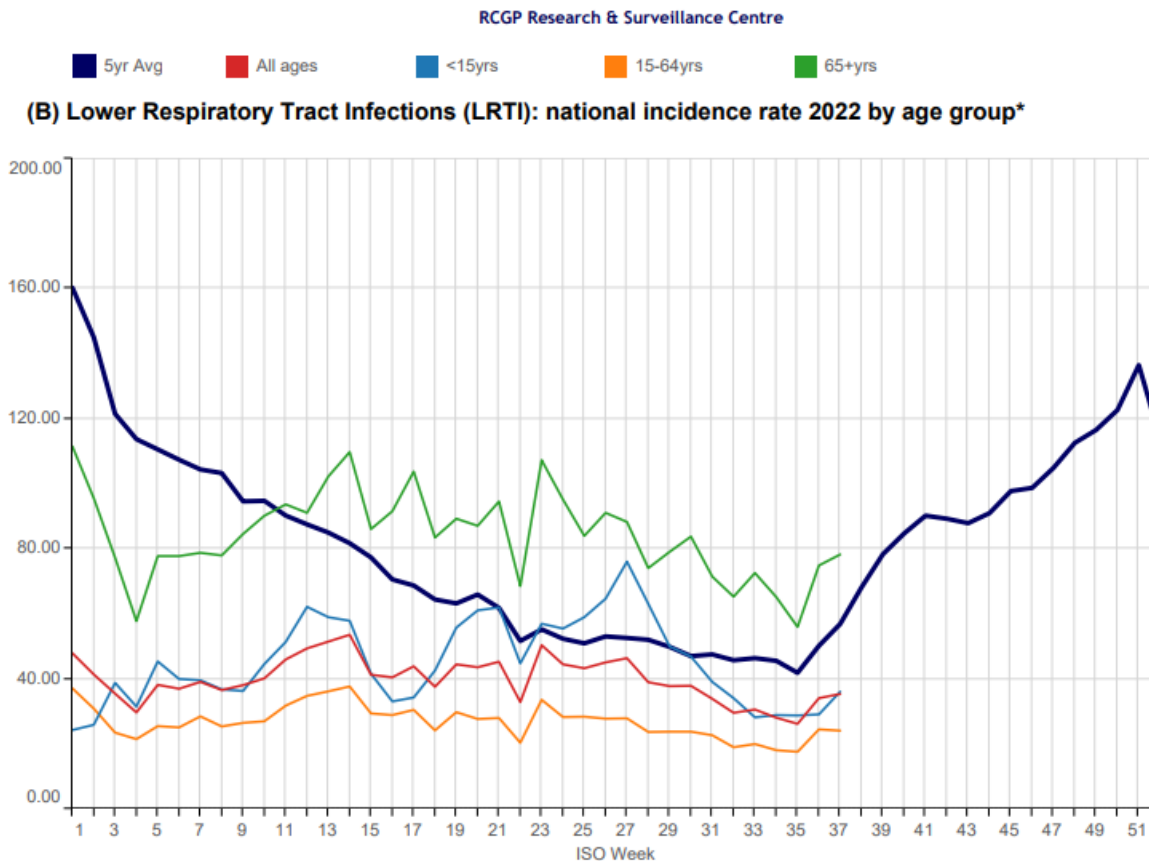


The number of serology samples collected in the last 4 weeks since 15th August 2022 suggests that the ≥ 65 ys and 45-64yrs age bands are the major age bands where serology samples are being collected.

In the week commencing on 5th September 2022, out of a total of 296 serology samples, 142 were for ≥ 65 yrs, 100 for 45-64 yrs, 53 for 15-44 yrs and 1 for 5-14 yrs. Please do continue to collect serology samples from younger age bands.

This information will guide the UKHSA to decide the immunization programme for the coming months. We appreciate your contribution and would like to encourage you to collect more virology swabs and serology samples. Thanks again!

LRTI Rates Are On The Increase



Our latest analysis indicates that, not only do lower respiratory tract infection rates for those aged 65 or over continue to sit above the 5-year average, they are now also on the increase.

Although rates for those in younger age bands remains below the 5-year average overall, they have also been on the increase over the past two weeks.

Our results rely on information collated through the disease surveillance data you provide from your clinical system. Please continue to code for influenza-like-illness (ILI), RSV and other respiratory conditions.

Remember to code (ILI) as a problem - similarly for bronchiolitis and other infections. Please also record a disease concept (e.g. LRTI, URTI), and not a symptom (e.g. cough / sore throat) wherever possible. Thank you!

Book A Practice Visit!

We're always available for a Teams or Zoom chat, but we're also really keen to get out and meet our members in person!

Some practices have found this really helpful, so if you would like us to visit, use the button below and select a time and date - we'll do our best to meet your requirements.